

# BaselineZ Features | version 2024.2

## BaselineZ XR Applications - All Devices

- Renewed wellbore Animation feature, available directly in the Wellbore Context Menu, [Figure 1](#)
- 3D Grid Property Range filtering option to only show the 3D Grid cells in a specific range, available in the 3D Grid Inspector, [Figure 2](#)
- 3D Seismic slicing and loading performance improvements
- Data Room and 3D Story loading speedup
- Improved visualization of Core Labels next to the wellbores
- Additional control to resize Core Label next to the wellbores (via Display Settings)
- For all items basic information is added to the inspector (like number of grid cells, triangles, nodes etc)
- By default use Secure Websockets for collaboration between BaselineZ XR apps
- Security update: encryption added to all local cache storage

## BaselineZ HEAD Applications - Meta Quest / HTV VIVE Pro / HoloLens

- Renewed User Profile Panel (available on Project Panel)
- Renewed Session Panel (available on Project Panel), [Figure 3](#)
- Renewed Settings Panel (available on Project Panel)
- Renewed Information Panel (available on Project Panel)
- Renewed Project Settings Panel (available on Project Panel)
- Select a log 2x to select the Wellbore (to get the Wellbore Context menu quickly)
- Migrated Unity System Settings to new Settings Panel
- Migrated various tools from Toolbox to Hand Menu (Property Legend, Measurement Tool, Scale Tool)
- Project Panel has a refresh / reopen option to directly reload the data room with latest data updates

## BaselineZ AR Applications - iOS / Android

- Option to show/hide the 3D Story Panels

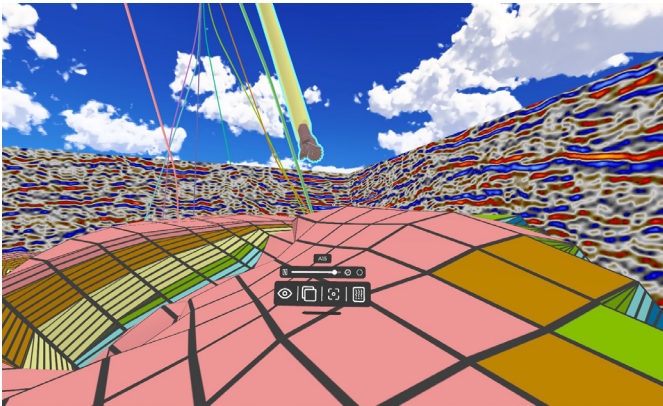


Figure 1 Renewed Wellbore Animation

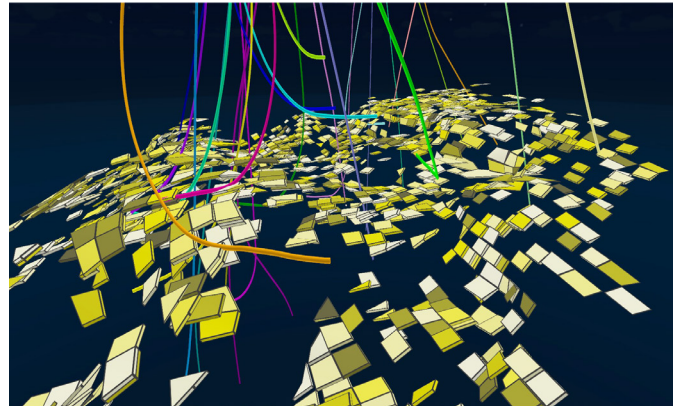


Figure 2 3D Grid Property Range Filtering

### BaselineZ PCVR Application - PC / SteamVR

- Option to select your Microphone
- Further improved controls when using Xbox controller

### BaselineZ for Igloo Application - Igloo Vision / BARCO

- Added dedicated Igloo Settings for controllers
- Support for both XBox and iPhone ICE controller app
- 3D Stereo Visualization support (in case supported by the connected Igloo Space)
- Enhanced Controls to pan/scale/rotate 3D Objects
- Added better default display position of 3D Story Panel (on the left side in a Igloo)
- Added better default display position for the Project Control Panel (on the left side in a Igloo), [Figure 4](#)
- Added option to Reset the player to default startup location
- Improved visualization of Compass (always on the floor and in the center of an Igloo)
- Improved visualization of Grid lines (always on the floor and in the center of an Igloo)

### BaselineZ Server - Web Portal / (Microsoft Azure / On Prem)

- On Prem Server Deployment available
- OIDC Authentication option available (e.g. connect your own company authentication and email)
- Customer managed encryption key option
- Postgres database support added
- Local accounts authentication for evaluation & testing

### BaselineZ Data Connector Addins - Petrel / JewelSuite

- BaselineZ Petrel Plugin available in OCEAN Store (for Petrel 2021, 2022 and 2023)
- Added support for JewelSuite 2024.1
- Added reconcile support for multiple versions of the same .pet or .jewelfile

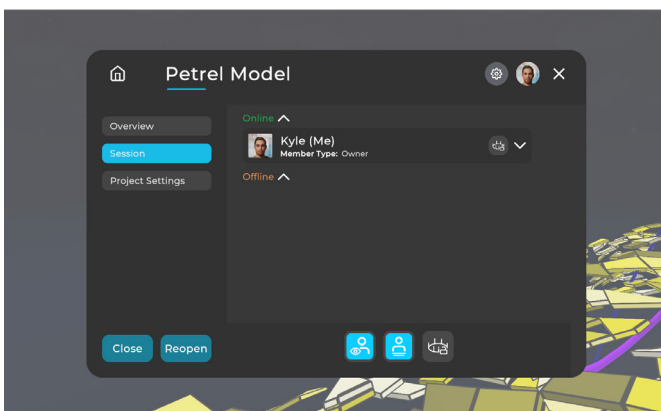


Figure 3 Renewed Session Panel

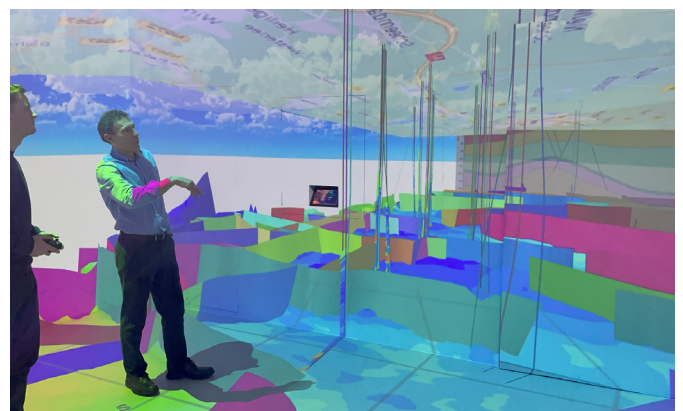


Figure 4 Better 3D Story Panel Position

## Defect Fixes

- Flickering of large Logs around wellbores when toggling on/off
- 3D Grid not properly selected in Animation Tool
- GeoRef images from Petrel not property exported in SI units
- In case Photonserver cannot be accessed, projects can still be loaded (without collaboration though)
- Speedup discovery of available BaselineZ Servers in server selection box (in case of On Prem server installation only)

For more information, contact us at [info@baselinez.com](mailto:info@baselinez.com) or visit our website at [www.baselinez.com](http://www.baselinez.com)

---

Copyright © 2024 – All right reserved Craytive Technologies BV, The Netherlands