

BaselineZ Features | version 2024.3

BaselineZ XR Applications - All Devices

- Added logarithmic scale visualization support for properties and attributes
- Upgraded Video Player control to increase overall playback performance (except for HoloLens)
- In case your license in Expired, a notification shows up in the Project Panel
- Improved Core Table interaction controls (scrollbar, sliders, buttons)
- Extended user setting serialization option (per device, per user, for all users)
- Reset to default options available for many settings
- Improved visualization of logs around wellbores when model is vertically stretched
- Improved seismic slicing performance on larger seismic volumes

- Defect Fixes
 - * Fixed Legend does not work well with grid animation (20354)
 - * Fixed Demo project hides well bores as soon as selected (20480)
 - * Fixed When joining project, all previous well animations play with sphere (20410)
 - * Fixed Core labels sometimes do not show (20515)
 - * Fixed Time animation not working in story if master client never opens panel (20347)
 - * Fixed Wellbore animation clipping box size not synced (20351)
 - * Fixed Drillbit rotates counterclockwise (20352)
 - * Fixed Wellbore animation flickers when clipping box is enabled and manually moved (20350)
 - * Fixed Clipping shapes not moving with controller (20387)
 - * Fixed Black background icon when hovering over UI panel text items (20509)

BaselineZ HEAD Applications - Meta Quest / HTV VIVE Pro / HoloLens

- Context menu has a new option Information to show high-level item information
- New Universe Environment available
- Additional project settings (Websockets/UDP, Offline Mode option, SSL usage for local server deployments)

BaselineZ PCVR Application - PC / SteamVR

- Defect Fixes
 - * Fixed Server drop-down scrolling with mouse very slow (20373)



BaselineZ for Igloo Application - Igloo Vision / BARCO

- Additional Settings
 - * Igloo Shape and Dimensions (Cube+Width+Lenght/Cylinder+Radius)
 - * UI Distance Slider
- Rotation improved by rotating around the current cursor position
- Added application license check, requires BaselineZ IGLOO license

- Defect fixes
 - * Fixed Some UI (Probe, Legend, Measurement Tool) behind other data (20389)
 - * Fixed Core Table UI not working properly with controller (20385)
 - * Fixed Compass not visible when beneath floor (20477)
 - * Fixed Probe button click and hold not working when NOT using hands/controllers (20386)
 - * Fixed Vertical scale slider not scaling model (20384)
 - * Fixed 3D Story panel starts glitching when hovering over gripper bar (20498)
 - * Fixed Seismic Slice snaps back after moving it during well planning when using controller (20388)
 - * Fixed Rotation around horizontal axis is not possible if there is NO rotation constraint for Cores (20476)
 - * Fixed Igloo project panel does not show on startup (20369)
 - * Fixed Concept Modeling interaction inside Igloo Spaces
 - * Fixed Sensitivity sliders
 - * Fixed Enabled rotation when cursor is on seismic slices (did not rotate in case seismic was selected)

BaselineZ CORE Application

- Added new user interface to add, update and delete Information Points to items
- Added application license check, requires BaselineZ CORE license

- Defect Fixes
 - * Fixed server dropdown empty when discovery server cannot be reached (20085)
 - * Fixed adding a new well to existing project not working correctly (19826)

BaselineZ RESQML Application

- Added new user interface to add, update and delete Information Points to items
- Added application license check, requires BaselineZ RESQML license

- Defect Fixes
 - * Fixed server dropdown empty when discovery server cannot be reached (20085)

BaselineZ JewelSuite Plugin

- Added new user interface to add, update and delete Information Points to items
- Improvement project synchronization and server push performance (using item Version ID)

- Defect Fixes
 - * Fixed server dropdown empty when discovery server cannot be reached (20085)
 - * Fixed renamed solution with missing items not reconciled correctly (20272)
 - * Fixed Crash when trying to reconcile with unsaved solution (20108)

BaselineZ Petrel Plugin

- Added new user interface to add, update and delete Information Points to items
- Added support for explicit ACTNUM property to filter out undefined regions
- Added an option for private browser mode when using the Embedded BaselineZ Web Client in the Petrel BaselineZ
- Improvement project synchronization and server push performance (using item Version ID)
- Petrel 2024 support

- Defect Fixes
 - * Fixed server dropdown empty when discovery server cannot be reached (20085)
 - * Fixed invalid global extend after pushing additional data to server (20383, 20146)
 - * Fixed Depth of GeoRef images in Petrel not serialized with SI units (20072)
 - * Fixed Seismic down scaling calculation inconsistent (20241)
 - * Fixed Open project with clean cache very slow (20096)
 - * Fixed incorrect restored 3D grid cropping end IJK settings (20736)

BaselineZ Server / Web Portal - Microsoft Azure / On Prem

- Installer available for On-Prem Windows Server deployment
- Docker container available for Linux Azure App Service deployment
- Switched Flatbuffers.Core for Google.FlatBuffers library
- Various performance enhancements for pushing and reading data from BaselineZ server

- Defect Fixes
 - * Fixed Drag+drop images on timeline give duplicate upload (20348)
 - * Fixed PointSets and PolylineSets not available in Project Overview (20469)

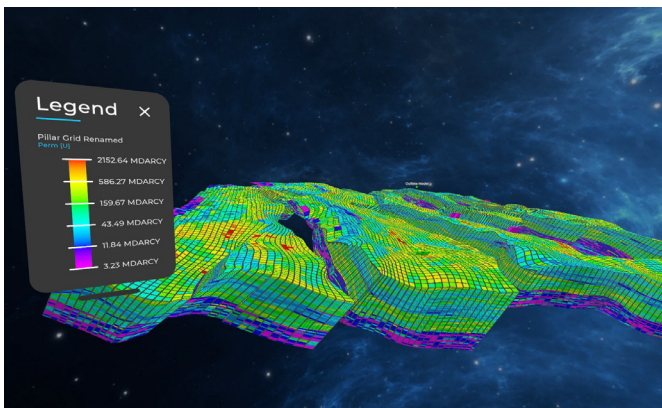


Figure 1 Logarithmic Scale Visualization

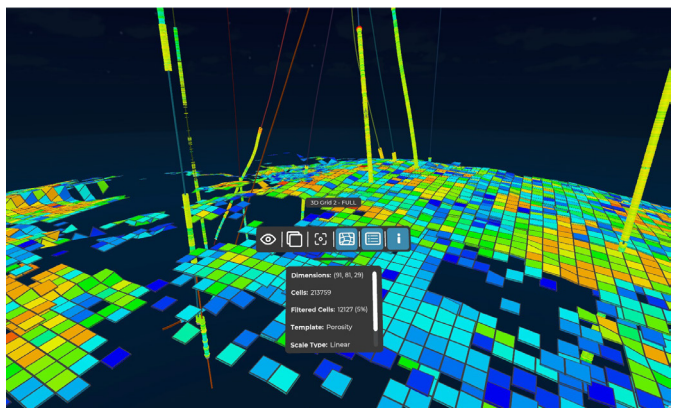


Figure 2 High Level Context Menu Information

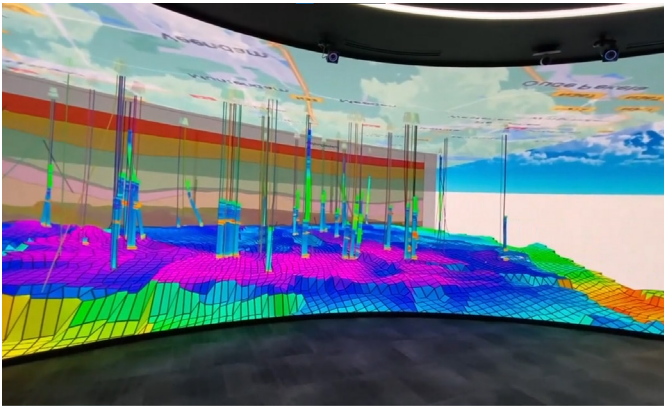


Figure 3 BaselineZ in Igloo Cylinder Spaces

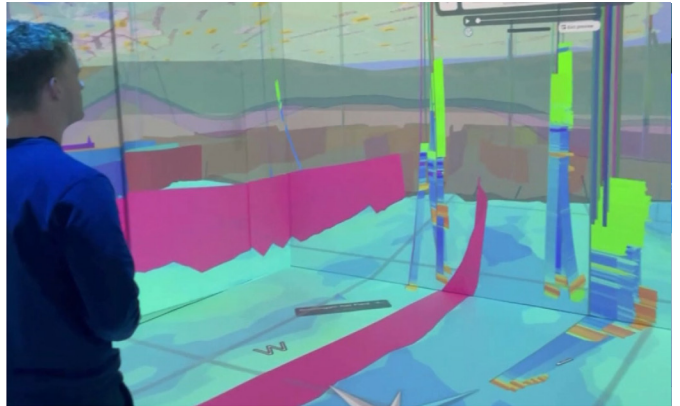


Figure 4 BaselineZ in Igloo Cube Spaces

For more information, contact us at info@baselinez.com or visit our website at www.baselinez.com

Copyright © 2024 – All right reserved Craytive Technologies BV, The Netherlands