

BaselineZ Features | version 2025.2

BaselineZ VR, MR and IGLOO Applications

- The Project Control Panel has been completely replaced by the new Explorer / Inspector Panel [Figure 1](#)
 - Explorer → New Explorer / Inspector Panel
 - Inspector → New Explorer / Inspector Panel
 - Display Settings → New Explorer / Inspector Panel (available under the various Admin items, see below)
 - Cloud Items → New Explorer / Inspector Panel
 - Toolbox → Partly in new Explorer / Inspected Panel (under Settings) and partly added to the Hand Menu Tools
 - Timeline → This panel has been removed as it was not so much used
- New Explorer / Inspector Panel with a fresh new user interface and intuitive interactions
 - Geo Items Group - All Geo Model admin items are available in a group that can be expanded and collapsed
 - File Items Group - All Project and Timeline Files are available in the new Explorer group that can be expanded and collapsed
 - Explorer Item Search options
 - Direct access to the various VR Environments (Geo House, Sky Room, Night Sky Room and Universe Room)
 - Project Settings are added here, including Unit System, 3D View Settings and Layout Manager)
- New Inspector Panel, integrated with the New Explorer Panel [Figure 2](#)
 - Display settings available for each select Geo Items, either in the 3D view or in the Explorer
 - Display settings available for each select Admin items in the Explorer
 - The Inspector can be expanded and collapsed
 - The Inspector settings for each item have been group and per group can be expanded and collapsed

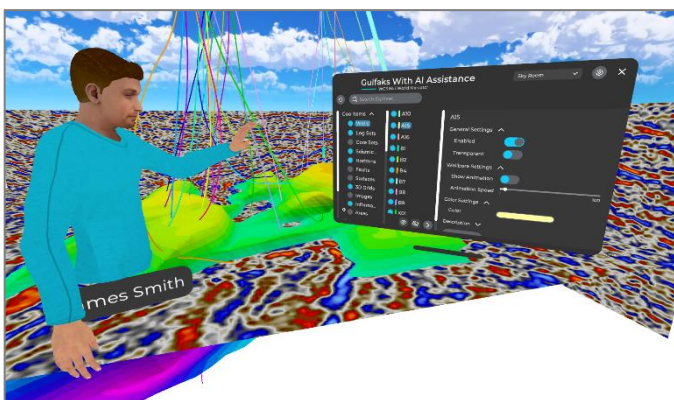


Figure 1 – New Explorer Panel to easy data access

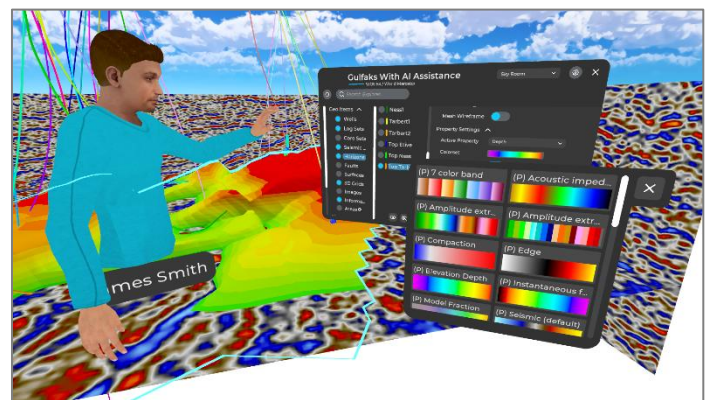


Figure 2 – Integrated Inspector to all display settings



- Each Geo Item has a new Reset option (bottom of the inspector) which resets the geo item to its original state
- The Color Selection control has been changed to a much better visual color control
- The Property Selection control has been changed to a simple drop-down list
- The Property Color set control has been changed to an easier to use selection and range settings control
- Inspector Options are available for all Admin Items
 - Wells - All display settings for all Wells such as show/hide names, cone sizes, show as lines etc.
 - Surfaces - All display settings for all Surfaces such as mesh line colors, lighting settings etc.
 - 3D Grids - All display settings for all 3D Grids such as mesh line colors, lighting settings etc.
 - Log Sets - All display settings for all Log Sets such as cone sizes etc.
 - Core Sets - All display settings for all Core Sets such as label sizes, IP sizes, show/hide virtual core table etc.
- AI Assistant is available using [Figure 3](#)
 - General ChatGPT integration
 - Customized ChatGPT Playground integration - upload your own documents for intelligent questioning directly in XR
 - Voice to Text is available to efficiently ask questions to the AI Assistant
- The Hand Menu has been extended with the following options [Figure 4](#)
 - The New Explorer is the first available menu option
 - The Virtual Core Table is now available in the Tools menu
 - The 3D Story Creator is now available in the Tools menu
 - The New Camera Tool is now available in the Tools menu
 - The AI Assistance is now available in the Experimental menu
- New Camera Tool (available in Hand Menu)
 - Directly attached to the Hand Menu so that it's much easier to position and take a picture
 - Redesigned user interface to improve usability
 - Added subtle sound to improve user experience
 - Camera tool can be made available attached to both the Left- and Right-hand menu
 - Camera tool can be detached from the hand menu for free in space positioning

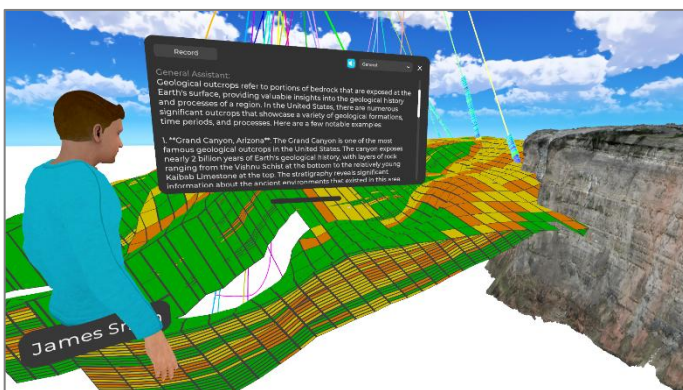


Figure 3 – Integrated AI Assistant, available in XR

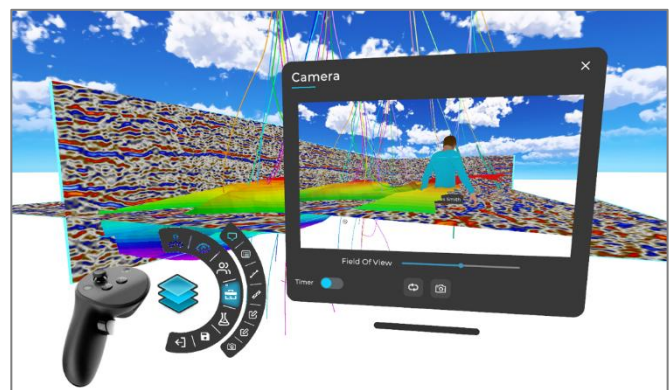


Figure 4 – Expanded hand menu option and new Camera Tool

- Significantly improved performance (up to 2x as fast) for:
 - Loading projects and 3D stories with large 3D Grids
 - Loading projects and 3D stories with large number of Wells
 - Loading projects and 3D stories with large Surfaces
 - Project Panel with many project loads and scrolls much faster
- Defect Fixes

BaselineZ Server / Web Portal (Microsoft Azure / On Prem)

- A new File Explorer has been implemented to directly upload files *Figure 5 and 6*
 - Image Files (JPG, PNG)
 - Video Files (MP4)
 - PDF Files (PDF)
 - 3D Object Files (OBJ, FBX, GLB)
- The new File Explorer has the following features
 - Custom folder creation / rename / delete
 - Custom file upload / rename / delete
 - Single or Multiple File upload in one go
- AI Assistant can be added to each project, available in the Project Menu (add API Key and Tokens)
- BaselineZ Server can now also be deployed using IIS hosting support on Windows Server 2019+ +
- Additional Security to hide the project 3D Story Editor and Repository for users with only Viewer access
- Restricted Personal Information collection and usage in the User Projects (removed gender, phone number and birth date)
- Support to Delete / Leave multiple projects at once (available using View All)
- Defect Fixes

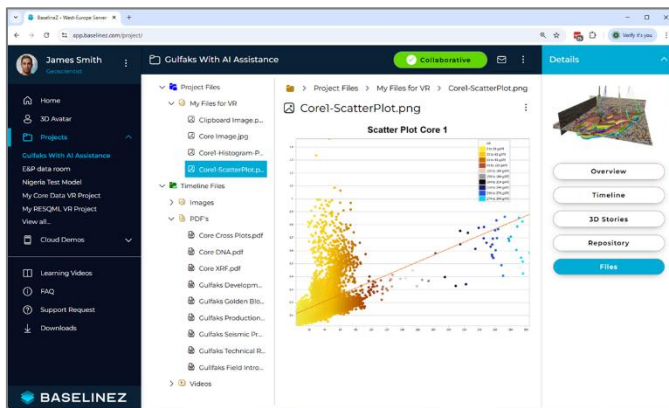


Figure 5 – New Files panel to upload your project files

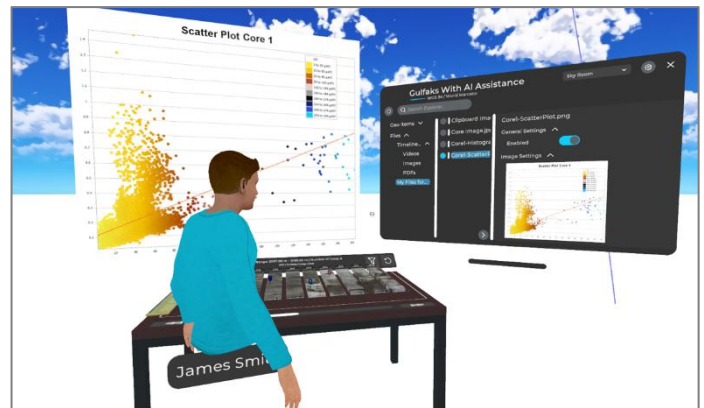


Figure 6 – Easy access to your project files in the new Explorer

BaselineZ Petrel Plugin

- Petrel Version and Ocean Store Enhancements
 - The BaselineZ Petrel Plug-in is available for Petrel 2022.x, 2023.x and 2024.x.
 - The BaselineZ Petrel Plug-in is available for download from the Schlumberger Ocean Store.
 - The BaselineZ Petrel Plug-in is available for DELFI (contact us as sales@baselinez.com).
- BaselineZ Server Connectivity Enhancements
 - The BaselineZ Petrel Plug-in is available for use with BaselineZ 2025.2 Cloud Servers.
 - The BaselineZ Petrel Plug-in is available for use with BaselineZ 2025.2 On Prem Servers.
- Defect Fixes

BaselineZ JewelSuite Plugin

- JewelSuite Version Enhancements
 - The BaselineZ JewelSuite Plug-in is available for JewelSuite 2022.x, 2023.x, 2024.x and 2025.x.
 - The BaselineZ JewelSuite Plug-in is available for download from BaselineZ downloads pages in our portal.
- BaselineZ Server Connectivity Enhancements
 - The BaselineZ JewelSuite Plug-in is available for use with BaselineZ 2025.2 Cloud Servers.
 - The BaselineZ JewelSuite Plug-in is available for use with BaselineZ 2025.2 On Prem Servers
- Defect Fixes

BaselineZ CORE Application

- BaselineZ Server Connectivity Enhancements
 - Upgraded CORE application connectivity to BaselineZ 2025.2 AZURE Servers.
 - Upgraded CORE application connectivity to BaselineZ 2025.2 On Prem Servers.
- Defect Fixes

BaselineZ RESQML Application

- BaselineZ Server Connectivity Enhancements
 - Upgraded CORE application connectivity to BaselineZ 2025.2 AZURE Servers.
 - Upgraded CORE application connectivity to BaselineZ 2025.2 On Prem Servers.
- Defect Fixes